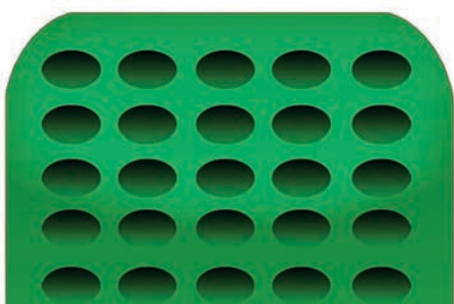
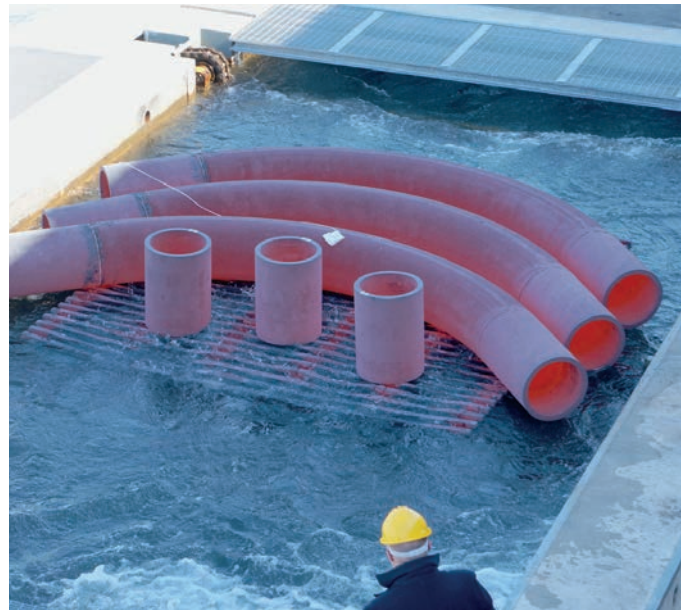




**TECTUBI RACCORDI S.p.A**



**BUTT WELDING FITTINGS  
AND SPECIAL PRODUCTS  
HOT INDUCTION BENDS  
AND CLAD BENDS  
WELDED AND CLAD PIPES**



## Company profile

**Tectubi Raccordi** has a very long historical background. Founded in 1954 and entered in the **Allied International Group** in 2003, **Tectubi Raccordi** was the first Italian manufacturer of steel butt-weld pipe fittings.

During the years the company has acquired a position of leadership both on the Italian and international markets, acting as a reference point for the entire sector for fittings and bends, responding to the combined needs of oil & gas pipelines, shipyards, chemical and nuclear installations.

The company, with headquarters in Podenzano and 5 plants in the North of Italy, had reached a yearly capacity of 48,000 tons of fittings up to 120" in all material grades, 10,000 tons of bends up to 60" (hot induction bending and cold forming), and 7,500 tons of welded and clad pipes:

- **Podenzano** (Piacenza): all sizes of welded and seamless fittings (elbows, tees, reducers, caps, special pieces) up to 60" in all types of ferrous, non-ferrous and special alloy materials and special products. Cold forming tees up to 16";
- **Castel San Giovanni** (Piacenza): mandrel elbows up to 56". Elbows, tees, reducers, caps and special pieces seamless and welded up to 120";
- **Calendasco** (Piacenza): seamless and welded cold formed elbows in stainless steel and special alloys up to 16";
- **Carbonara Scrivia** (Alessandria): cold bending elbows and hot induction bending elbows up to 60";
- **Schio** (Vicenza): welded pipes thin wall and heavy wall up to 100" and 12 mt length. Clad/lined pipes.

**Tectubi Raccordi** is approved by the major players and is certified, among others, ISO 9001:2015, ISO 14001:2015, ISO 45001:2018, AD 2000-Merkblatt HP0 - W0 - PED 2014/68/EU, ASME Section III NCA 3800 and compliant with RCC-M rules.



## Company details

**Company Name**  
TECTUBI RACCORDI S.p.A.

**Registered Office**  
Via Roma, 150  
29027 Podenzano  
(Piacenza), Italy

**Chamber of Commerce**  
REA/PC 157708

**Paid Capital**  
Euro 5,160,000.00

**VAT No.**  
IT 01230470997

**Sales Office & Administration**  
Via Roma, 150  
29027 Podenzano  
(Piacenza), Italy

**Plants**  
Via Roma, 150  
29027 Podenzano  
(Piacenza), Italy

Via Emilia Pavese, 34/A  
Località Campo d'Oro  
29015 Castel San Giovanni  
(Piacenza), Italy

Via Ancona, 27  
29010 Calendasco  
(Piacenza), Italy

Corso Genova, 4  
ex S.S. 35 dei Giovi km 64  
15050 Carbonara Scrivia  
(Alessandria), Italy

**Telephone**  
+ 39 0523 555311

**Fax**  
+ 39 0523 559621

**E-mail**  
info@tectubiraccordi.com

**Website**  
www.tectubiraccordi.com

## Products & target markets

**Tectubi Raccordi** produces a wide range of fittings, such as elbows, tees, reducers, caps, bends and many others from 1/2" to 120" diameter in all material grades, according to international standards and clients' requirements.

The target markets of **Tectubi Raccordi** can be divided into up/mid/downstream, which include onshore and offshore/subsea plants, oil&gas pipelines, refineries, and power generation such as nuclear and thermal power plants. **Tectubi Raccordi** manages the whole cycle of production, distribution and aftersales services in all these markets.

EPC companies represent the largest part of its capacity.

Close co-operation with clients gives the company the opportunity to develop the market and the products in line with trends in the field of energy.



## Standard fittings

TYPE OF PRODUCT	DIMENSIONS	STEELS	EXECUTION
Elbows	Up to 120"	All grades	Seamless and welded (cold formed, hot formed and by mandrel)
Equal and reducing tees	Up to 120"	All grades	Seamless and welded (cold formed and hot formed)
Concentric and eccentric reducers	Up to 120"	All grades	Seamless and welded (cold formed and hot formed)
Caps	Up to 120"	All grades	Seamless (cold formed and hot formed)

## Special fittings

TYPE OF PRODUCT	DIMENSIONS	STEELS	EXECUTION
Reducing elbows	Up to 60"	All grades	Seamless and welded
Special radius bends (3D)	Up to 56"	All grades	Seamless and welded segmentable
Special radius bends (2,5D 3D 4D 5D 7D 10D 18D)	Up to 60"	All grades	Seamless and welded (hot induction and cold formed)
Barred tees	Up to 120"	All grades	Seamless and welded (cold formed and hot formed)
Special flow tees	Up to 120"	All grades	Seamless and welded
Equal and reducing crosses	Up to 120"	All grades	Seamless and welded
Equal and reducing laterals	Up to 120"	All grades	Seamless and welded

## Special products

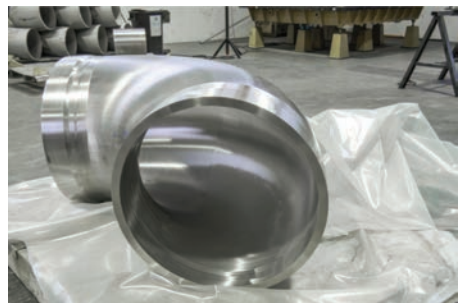
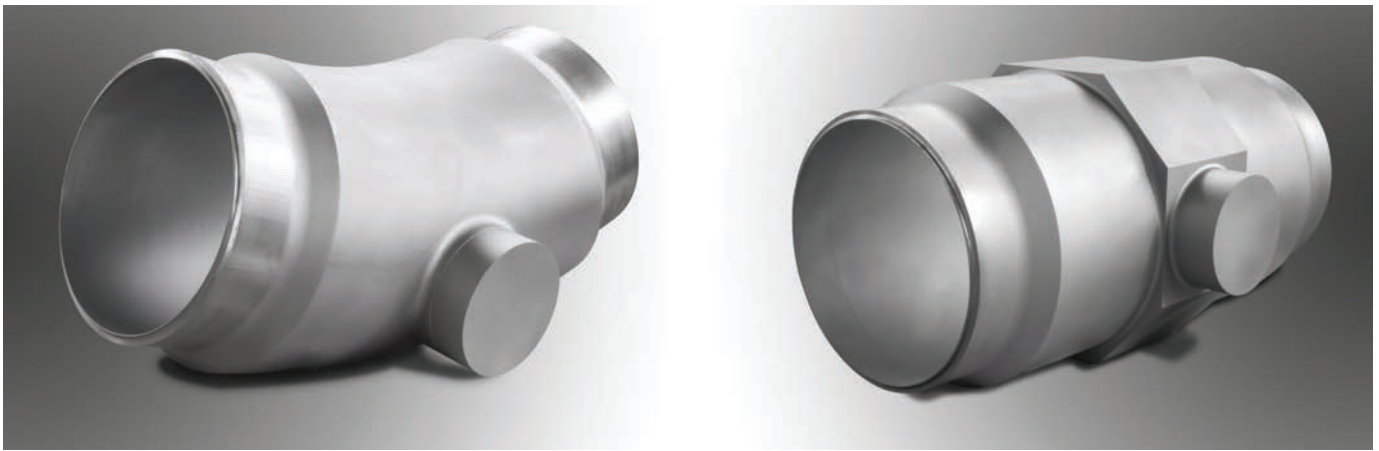
TYPE OF PRODUCT	DIMENSIONS	STEELS	EXECUTION
Headers and extruded manifolds	Up to 120"	All grades	Seamless and welded
Split tees	Up to 120"	All grades	Seamless and welded
"Y" pieces	Up to 120"	All grades	Seamless and welded

## More than 50 years of experience in the nuclear

70's: production of fittings for Italian NPPs in Caorso and Trino Vercellese in cooperation with Ansaldo Nucleare and General Electric and first relationships with Framatome and EDF for the construction of the first NPPs in France (Phoenix and Super-Phoenix).

80's & 90's: production of fittings for the Italian NPP in Montalto di Castro and the first NPP in China in cooperation with Framatome (AREVA NP).

2000 - today: supplies of standard and special fittings for the new generation of NPP (EPR and AP1000) in France, China, South Korea and South Africa.



# TECTUBI RACCORDI Bending division

## Cold bending

The company's cold bending process enables the manufacture of a wide range of products such as bends with radius exceeding 4D and angles up to 180°, with a minimal thickness reduction.

The bends can be in carbon steel, alloy steel, stainless steel, duplex and titanium, welded (SAW or ERW) or seamless, with diameters ranging from 2" to 60".

## Allowances

4D BENDS	
External diameter	+0% -3%
Angle	30' ÷ 1°
Thickness	11% maximum reduction of extrados
Ovalisation	3%

5D BENDS	
External diameter	+0% -2%
Angle	30' ÷ 1°
Thickness	8% maximum reduction of extrados
Ovalisation	2%

7D BENDS	
External diameter	+0% -1,5%
Angle	30' ÷ 1°
Thickness	6% maximum reduction of extrados
Ovalisation	1,5%



## Hot bending

The company has recently increased its capacity with the purchase of a new induction bending machine, Schäfer SRBMI 1400. This machine enables the production of bends in diameter from 2" to 56", bending radius from 250 mm to 10,000 mm and thickness from 7 mm to 100 mm.

The machines, electronically interfaced, are provided with a control system which enables them to adapt to variations in load, while keeping control over the temperature, reducing heat losses to a minimum. The material properties are retained accordingly, even after the bending and heat treatment process, in accordance with applicable specifications.

## Allowances

3D BENDS	
Angle	30' ÷ 1°
Thickness	11% maximum reduction of extrados
Ovalisation	3,5%

5D BENDS	
Angle	30' ÷ 1°
Thickness	8% maximum reduction of extrados
Ovalisation	2%

7D BENDS	
Angle	30' ÷ 1°
Thickness	6% maximum reduction of extrados
Ovalisation	1,5%

## Certifications

- ISO 9001: 2015 by Bureau Veritas
- ISO 14001: 2015 by QS International
- ISO 45001: 2018 Certification by QS International
- ISO 17025 by Bureau Veritas
- ISO 3834-2: 2006 Certification by TÜV SÜD
- ABSA - Statutory Declaration
- AD 2000 MERKBLATT HP0 by TÜV NORD
- AD 2000 MERKBLATT W0 by TÜV NORD
- AD 2000 MERKBLATT W0 PED 2014/68/EU Certification by TÜV NORD
- ASME Quality System Certificate as a Material Organization ASME SECTION III NCA 3800 Certificate No. QSC - 603
- BV MARINE "Recognition for BV mode II scheme"

## Characteristics

MACHINE	COJAFEX PB 600	COJAFEX PB 1000	SCHÄFER SRBMI 1400
Bending radius	250 ÷ 3,050 mm	800 ÷ 5,100 mm	800 ÷ 10,000 mm
Diameter	2" ÷ 18"	8" ÷ 40"	8" ÷ 56"
Development	5,000 mm MAX	8,500 mm MAX	11,500 mm MAX
Pipe length	8,400 mm MAX	12,000 mm MAX	15,400 mm MAX
Thickness reduction	3D	11%	11%
	5D	8%	8%
	7D	6%	6%

## Clad induction bends

**Tectubi Raccordi Bending Division** manufactures a wide range of clad induction bends for applications under the most demanding conditions and services. All bends with  $R/D < 4$  are offered as hot induction bends, whereas for  $R/D \geq 4$ , **Tectubi Raccordi** offers cold formed bends as an alternative to hot ones.

## Product range

3D BENDS	
Outside diameter	from 2" to 56"
Wall thickness	from 7 mm to 100 mm
Pipe length range	from 8.4 m to 15.4 m
Bending radius	from 250 mm to 10,000 mm
Maximum envelope	from 5 m to 11.5 m
Backing materials	carbon steels, hi-yield grades, low alloy steels
Corrosion resistant alloy	S30403, S31603, S31703, S41000, N06625, N08825, etc.

- NNSA - China nuclear Certification
- NORSOK M-650
- PED 4.3 2014/68/EU by Bureau Veritas
- RCC-M rules - France nuclear compliance

In addition to these Certifications, issued by public entities and organizations, **Tectubi Raccordi** has Approvals issued by private and public companies, such as: **ADNOC, BP, Chevron, EDF-UTO, EIL, ENI, Gas de France, Gazprom, KNPC, KOC, National Grid, NCOC, NTPC, ONGC, Open Grid Europe, PDO, PG & E, Qatar Gas, QP, Saudi Aramco, Shell, SNAM Rete Gas, Total, TransCanada.**

## Materials used and related International Standards

### CARBON AND ALLOY STEEL FOR ROOM, MODERATE AND ELEVATED TEMPERATURES

#### ASTM / ASME A/SA 106 API 5L:

Gr.B - Gr.C

#### ASTM / ASME A/SA 335:

Gr.1 - Gr.11 - Gr.12 - Gr.5

Gr.22 - Gr.9 - Gr.91

#### ASTM / ASME A234: WPB

WPC - WP1 - WP11 - WP12

WP5 - WP22 - WP9 - WP91

WP92

#### EN 10216-2: P195GH

P235GH - P265GH

20MnNb6 - 16Mo3

8MoB5-4 - 14MoV63

10CrMo5-5 - 13CrMo4-5

10CrMo9-10

15NiCuMoNb5-6-4

X11CrMo5 - X11CrMo9-1

X10CrMoVNb9-1

X10CrWMoVNb9-2

X20CrMoV11-1 and

equivalent grades

#### EN 10253-1 EN 10253-2

#### RCC-M: CL2 - CL3 - NC

grades P265GH - P280GH

P295GH - P355NH - TU42C

AE250B1 (other grades can

be supplied upon request).

### CARBON AND ALLOY STEEL FOR LOW TEMPERATURE SERVICE

#### ASTM / ASME A/SA 333:

Gr. 6, Gr. 3, Gr. 8 and

equivalent grades

#### ASTM / ASME A/SA 420:

WPL6 - WPL3

### STAINLESS STEEL

#### ASTM / ASME A/SA 312:

TP304 - TP304L - TP304H

TP304LN - TP304N

TP316 - TP316L - TP316H

TP316LN - TP316N - TP317

TP317L - TP321H - TP347

TP347H - S31254 and

equivalent grades

#### ASTM / ASME A/SA 403:

WP304 - WP304L - WP304H

WP304LN - WP304N

WP316 - WP316L - WP316H

WP316LN - WP316N

WP317 - WP317L - WP321

WP321H - WP347

WP347H - WPS31254

#### RCC-M: CL1 - CL2 - CL3

grades Z2CND17.12

Z2CN18.10 - Z2CND18.12N

(other grades can be

supplied upon request)

#### ASTM A774: TP304L

TP316L TP317L - TP321

TP347

#### Equivalent grades of EN

#### 10253-3 EN 10253-4 (former

AFNOR-DIN-BS equivalent

grades).

### COPPER ALLOY

#### Copper-nickel ASTM /

#### ASME B/SB 466: UNS

C70600 (CuNi 90/10)

UNS C71500 (CuNi 70/30)

and equivalent grades.

### TITANIUM ALLOY

#### ASTM / ASME B/SB363:

WPT2 - WPT12

and equivalent grades

### HIGH YIELD STEEL FOR PIPELINE AND OFFSHORE

#### API 5L: Gr. X42 - X46 - X52

X60 - X65 - X70 - X80

#### EN 10208-2: L245NB

L290NB - L360NB - L415NB

L360QB - L415QB - L450QB

L485QB - L555QB - L360MB

L415MB - L450MB

L485MB and equivalent

grades

#### ASTM A860/MSS-SP75:

WPHY 42 WPHY 46 - WPHY

52 - WPHY 60 - WPHY 65

WPHY 70 grades - WPHY 80

only as per MSS-SP75

### AUSTENITIC/FERRITIC STAINLESS STEEL

#### ASTM / ASME A/SA 790:

UNS 31803 (duplex) - UNS

32750 (superduplex)

UNS 32760 (superduplex)

UNS 32550

(superduplex) and equivalent

grades

#### ASTM / ASME A/SA 815:

UNS 31803 (duplex)

### NICKEL ALLOY

#### ASTM / ASME B/SB 366:

UNS N04400 - UNS N06600

UNS N06625 - UNS N08020

UNS N08800 - UNS N08811

UNS N08825 - UNS N10276

and equivalent grades.

## Design codes

ASME B31.1 - ASME B31.3  
ASME B31.4 - ASME B31.8

EN 13445 - 13480 - 12952

(former BS PD 5500

Swedish ordinance AFS

1994:39)

DIN 2413 - TRD301

AD 2000 Merkblatt B2-B3-B9

STOOMWEZEN rules for

pressure vessels

## Manufacturing Standards

ASME B16.9 - ASME B16.25

MSS-SP43 - MSS-SP75

DIN 2605 - 2606 - 2615

2616 - 2617 - BS 1640

GOST 17374 - 17375

17376 - 17377 - 17378

17379 - 17380





## Company profile

Since 1980 **Gieminox**, established in Schio, Vicenza, Italy has become a well-established manufacturer of longitudinally welded pipes, clad pipes, lined pipes, fittings and auxiliary components in stainless steel, nickel and nickel alloys, duplex and superduplex.

In 2011 **Tectubi Raccordi** incorporated **Gieminox** into **Gieminox-Tectubi Raccordi Welded Pipes Division**, thus broadening the product range through the direct production of welded pipes up to 100" and clad/lined pipes from 6" up to 100" OD in every type of steel. Since then, the company has invested in equipment such as brake presses, heat treatment furnaces, rolling/welding/turning machines, so as to guarantee the highest production standards according to the international specifications.

The company produces welded pipes up to 70 mm wall thickness and up to 12,2 meter lengths, solid CRA (Corrosion Resistant Alloy) pipes, bi-metal lined pipes, overlaid clad pipes and longitudinally metallurgically-welded clad pipes, designed to meet specific requirements in terms of mechanical and corrosion properties.

**Gieminox-Tectubi Raccordi Welded Pipes Division** serves worldwide projects in the oil&gas, chemical and petrochemical industries, power plants, mining industry, water treatment plants, engineering and construction.

## Products and target markets

### LONGITUDINALLY WELDED PIPES

#### MANUFACTURING RANGE

Outside diameter: *from 3" to 100" and including all non-standard sizes, per ASTM/ASME/DIN standards*  
Wall thickness range: *from 3 mm to 70 mm. Length range: up to 12.2 m*



### LONGITUDINALLY WELDED CLAD PIPES

#### MANUFACTURING RANGE

Outside diameter outer pipe: *starting from 6" to 100"*  
Wall thickness outer pipe: *from 10 mm to 70 mm*  
Length range: *up to 12.2 m*



### BI-METAL LINED PIPES

#### MANUFACTURING RANGE

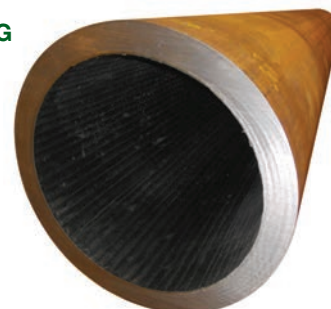
Outside diameter outer pipe: *from 6" to 24"*  
Wall thickness outer pipe: *from 10 mm to 35 mm*  
Length range: *from 2 m to 12,2 m*



### WELD OVERLAY CLADDING

#### MANUFACTURING RANGE

Outside diameter pipe: *from 6" to 48"*  
Wall thickness outer pipe: *from 6 to 70 mm*  
Length range: *up to 12,2 m*



## Company details

**Company Name**  
GIEMINOX TECTUBI  
RACCORDI S.R.L.  
Welded Pipes Division

**Chamber of Commerce**  
REA/VI 344108

**Paid Capital**  
Euro 2,000,000.00

**Registered Office**  
Via Lago di Vico, 22  
36015 Schio (Vicenza), Italy

**VAT No.**  
IT 03670350242

**Administration and Works**  
Via Lago di Vico, 22  
36015 Schio (Vicenza), Italy

**Telephone**  
+ 39 0445 575959

**Fax**  
+ 39 0445 575305

**E-mail**  
info@gieminox.com

**Website**  
www.gieminox.com

# GIEMINOX - TECTUBI RACCORDI Welded Pipes Division Manufacturing

## Materials used and related International Standards

### STAINLESS STEEL

304/L - 304/H - 316/L  
317/L - 321/H - 347/H  
309/S - 310/S - 410/S - 904L  
254SMO - 6Mo - 253Ma  
UREA grades

### DUPLEX AND SUPERDUPLEX STAINLESS STEEL

UNS S31803 - UNS S32205  
UNS S32750 - UNS S32760  
UNS S32550 - UNS S32101

### CARBON AND ALLOY STEEL FOR ROOM, MODERATE AND ELEVATED TEMPERATURES

P5 - P9 - P11 - P91

### NICKEL AND NICKEL ALLOYS

UNS N02200 - UNS N02201  
UNS N10276 - UNS N06622  
UNS N06455 - UNS N10665  
UNS N10675 - UNS N06600  
UNS N06601 - UNS N06617  
UNS N06625 - UNS N08825

UNS N08800 - UNS N08810  
UNS N08811 - UNS N08330  
UNS N08020 - UNS N08028  
UNS N08031 - UNS N06059

### TITANIUM

UNS R50250 - UNS R50400

### COPPER-NICKEL ALLOY

UNS C70600 (Cu/Ni 90/10)

### CARBON STEEL OR HIGH YIELD STRENGTH STEELS ARE USED AS OUTER PIPES:

API 5L grades:  
X42 - X52 - X60 - X65 - X70  
EEMUA grades:  
EP360 - EP415 - EP450  
EP485  
DNV grades:  
360Mpa - 415Mpa  
450Mpa - 485Mpa

## Design codes

ASME B31.3  
AD 2000 Merkblatt W0  
PED 97/23/CE  
API 5L/5LC/5LD  
DNV OS-F101

## Manufacturing Standards

ANSI B36.10 - B36.19  
B16.25  
ASTM A268 - A269 - A312  
A358 - A778 - A790 - A928  
B444 - B474 - B514 - B515

B517 - B673 - B705 - B725

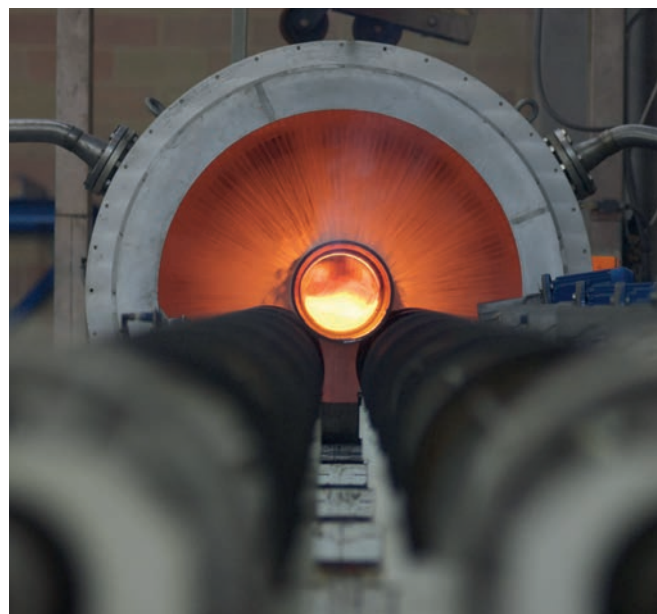
B862

EN 10217-5 - 10217-7  
10296-2

NORSOK M630

API 5L/5LC/5LD

DNV OS-F101

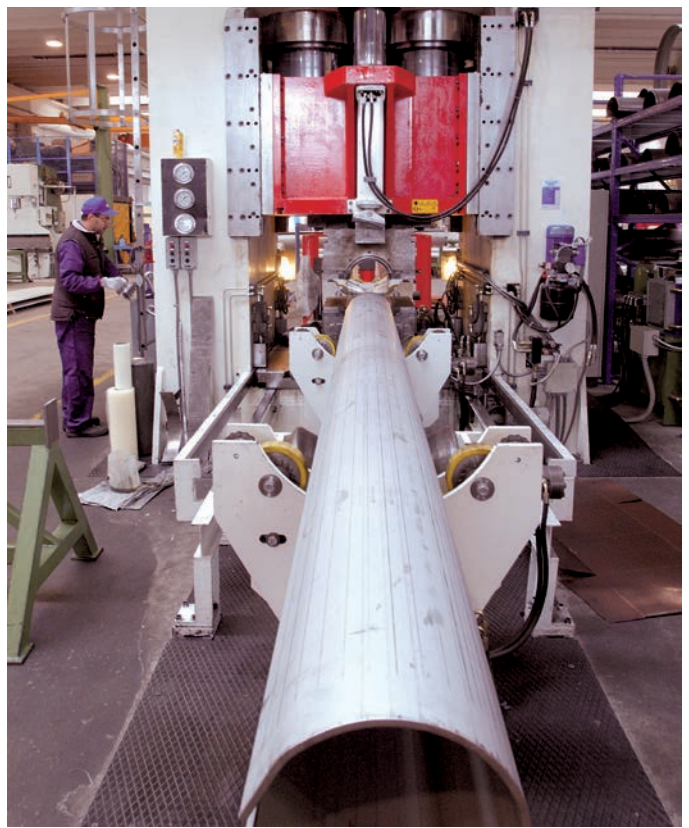


## Certifications

- ISO 9001:2015 by BUREAU VERITAS
- ISO 3834-2:2021 by TÜV SUD
- API Monogram Certificate 5L/5LC/5LD
- ASME PRT Certification
- Marine and offshore Certificate by BUREAU VERITAS
- DNV Certificate

- NORSOK QTR - UNS S31254/ S31803/ S32205/ S32750/ S32760/ N08926
- PED 2014/68/EU by TÜV ITALIA

In addition to these Certifications, issued by public entities and organizations, **Gieminox Tectubi Raccordi** has Approvals issued by private and public companies such as **EIL India, Petronet LNG** and **Saipem**.



# ALLIED IN THE WORLD



ALLIED GROUP COMPANIES	
AI	ALLIED INTERNATIONAL
AN	ALLIED NORTH AMERICA
TR	TECTUBI RACCORDI
GX	GIEMINOX TECTUBI RACCORDI
RF	RACCORDI FORGIATI
BA	BASSI
SI	SIMAS - ELKROM
IF	INTERFIT
PH	PHOCÉENNE
PT	PIPING TECHNOLOGIES
SA	SAIC
BSL	BSL PIPES & FITTINGS
PR	PETROL RACCORD
MA	MANDELLI



The fitting choice worldwide



## TECTUBI RACCORDI S.P.A.

### Head office and Works

Via Roma, 150 - 29027 - Podenzano (Piacenza) Italy  
 Tel. +39 0523 555311 - Fax +39 0523 559621  
 info@tectubiraccordi.com - www.tectubiraccordi.com



## GIEMINOX TECTUBI RACCORDI S.R.L.

### Administration and Works

Via Lago di Vico, 22 - 36015 Schio (Vicenza) - Italy  
 Tel. +39 0445 575959 - Fax +39 0445 575305  
 info@gieminox.com - www.gieminox.com

Tectubi Raccordi SpA and Gieminox Tectubi Raccordi SRL  
 are part of Allied International Group